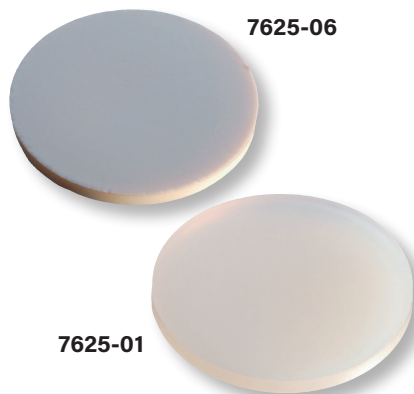




Septa Catalog

Ace Glass offers a full line of caps, closures, seals and septa. This new brochure combines all the choices in an easy-to-read and understandable format. Our extensive listing of septa types and material types is superior to that of any other company in the industry. We offer a broad line of flat septa made from many materials and material combinations for various vial, bottle, and container types. Ace also offers aluminum "crimp seals" (listed herein), and we also have pharmaceutical vial "stoppers" that go with the crimp closures. Ace features the most complete

offering of "sleeve" style septa, topped off with the only true and complete offering of the authentic Suba-Seal™ septa made by Sigma-Aldrich. Don't be fooled by cheap knockoffs on Suba-Seal septa — get the original Suba-Seal, made from rubber compounds that are softer and easier for puncture and resealing. See the ACE Laboratory Glassware & Equipment Catalog for a full listing of seals, septa, vials and bottles. As always if you don't see it here, please contact us. And contact us for your custom applications needs, too!



7625 SEPTA *Flat*

Flat septa primarily for caps. Fit readily into all GL threaded caps, such as Ace 7621, as well as others. Available in both plain silicone and bonded white PTFE faced, white silicone for extra added protection for chemical resistance. These can withstand 130°C temperature. Also resist coring when punctured via syringe needle.

<i>For cap size</i>	Type	O.D., mm	Thickness, mm	Qty	Order Code
GL14	Silicone	12	2	10	7625-01
GL18	Silicone	16	2	10	7625-02
GL25	Silicone	22	2	10	7625-03
GL32	Silicone	29	2	10	7625-04
GL45	Silicone	42	3	10	7625-05
GL14	PTFE-Faced Silicone	12	2	10	7625-06
GL18	PTFE-Faced Silicone	16	2	10	7625-07
GL25	PTFE-Faced Silicone	22	2	10	7625-08
GL32	PTFE-Faced Silicone	29	2	10	7625-09
GL45	PTFE-Faced Silicone	42	3	10	7625-10



8787 SEPTA *Flat*

Replacement flat septa for use with 9590 microscale reaction vials and any other V-bottom reaction vials. Septa are white silicone rubber bonded with white PTFE face. All 3mm thick. Septa resist coring when punctured via syringe needle.

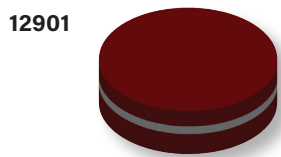
<i>For use with</i>	O.D., mm	Qty	Order Code
5/5 Thread Joint	8	48	8787-40
7/10 Thread Joint & Claisen Head	13	48	8787-41
10/10 Thread Joint	15	48	8787-43
14/10 Thread Joint	20	48	8787-42
24-410 Thread	24	48	8787-55
38-430 Thread	38	48	8787-58



12898 SEPTA *Flat*

Thicker, 3.5mm bonded PTFE faced silicone flat septa with a 6mm O.D.

Type	O.D., mm	Thickness, mm	Qty	Order Code
White Silicon w/PTFE bonded face	6	3.5	Pkg/50	12898-24



12901 SEPTA *Flat*

Three layer flat septa. Two harder layers of rubber outside and a softer silicone rubber inside. Available in either 7mm or 10mm O.D., both 4mm thick. 12901-42 is for 5037 electrode adapter, the 12901-48 is ideal for the Code 5029, #7 Ace-Thred bushing. These septa reseal easily.

O.D., mm	Thickness, mm	Qty	Order Code
7	4	Pkg/12	12901-42
10	4	Pkg/12	12901-48

12904 SEPTA *Flat*

Septa are flat 3mm thick gray silicone. Also for use with Ace-Thred fittings. Use 12904-06 with #7 Ace-Thred and 12904-10 with #11 Ace-Thred.

Type	Thickness, mm	O.D., mm	Qty	Order Code
Gray Silicone	3	11	Pkg/12	12904-06
Gray Silicone	3	12	Pkg/12	12904-08
Gray Silicone	3	13	Pkg/12	12904-10



12904, 12908, 12913

12908 SEPTA *Flat*

19mm O.D. by 3mm thick, flat, white silicone septa bonded with white PTFE face. Resists coring when punctured via syringe needle.

Type	Thickness, mm	O.D., mm	Qty	Order Code
White Silicon w/PTFE bonded face	3	19	Pkg/72	12908-60

12913 SEPTA *Flat*

32mm O.D. x 2mm thick, white bonded PTFE faced white silicone septa. Fits 12487 series, GPI 33-430 phenolic caps. PTFE faced silicone resists coring when punctured via syringe needle.

Type	Thickness, mm	O.D., mm	Qty	Order Code
White Silicon w/PTFE bonded face	2	32	Pkg/100	12913-40

5532-37



5532 SEALS *Aluminum*

Natural color Aluminum seals for use with any appropriate O.D. flat septa or 5531 flange style stoppers. Aluminum crimp-seals are for serum vials and bottles, headspace vials and any other crimp finish vials. For use with auto or hand crimping tools.

Colored or color coded are available on special order, as are other sizes.

5532-07



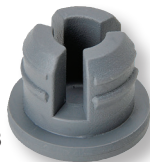
Type	O.D., mm	Case Qty	Order Code
One-piece, center disc tears out	20	1000	5532-07
One-piece, tears completely off	20	1000	5532-27
Open top	20	1000	5532-37
Center disc tears out, PTFE-faced red rubber liner	13	1000	5532-38



5531-06



5531-23, -45



5531-33

5531 SEPTA *Rubber Stopper Style*

Rubber pharmaceutical style stopper septa for all serum vials and bottles with 13x20mm opening necks. These are referred to as 20mm stoppers. Made with tight tolerances to fit easily and securely. Rubber formulations include; gray butyl and natural red rubber. Silicone and other compounds are available.

Type	For Mouth I.D. x O.D.	Case Qty	Order Code
Sleeve Style, Red Rubber	13 x 20	1000	5531-06
Flange Style, Red Rubber	13 x 20	1000	5531-23
Slotted, Gray Butyl	13 x 20	1000	5531-33
Flange Style, Gray Butyl	13 x 20	300	5531-47
Flange Style, Gray Butyl, PTFE face	13 x 20	1000	5531-60

9096



9096 SEPTA Sleeve Type (Red)

With hollow plug. Top is flanged with sleeve-like extension that folds down over the neck of vessel. The diaphragm can be punctured readily with a syringe needle. Puncture seals automatically after the needle is withdrawn.

<i>For use with</i>	Qty	Order Code	Qty	Order Code	Qty	Order Code
8mm O.D. Std. Wall Glass Tubing	Pkg/12	9096-32	72	9096-132	144	9096-232
14/20, 14/35 Joints	Pkg/12	9096-43	72	9096-143	144	9096-243
19/38, 19/22 Joints	Pkg/12	9096-54	72	9096-154	144	9096-254
24/40, 24/25 Joints	Pkg/12	9096-56	72	9096-156	144	9096-256

9096



9096 SEPTA Sleeve Type (White)

Same type septum as above except supplied in white rubber.

<i>For use with</i>	Qty	Order Code	Qty	Order Code	Qty	Order Code
5mm O.D. NMR Tubes & small tubing	Pkg/12	9096-26	72	9096-126	144	9096-226
7mm O.D. Std. Wall Glass Tubing	Pkg/12	9096-31	72	9096-131	144	9096-231
8mm O.D. Std. Wall Glass Tubing	Pkg/12	9096-33	72	9096-133	144	9096-233
9-12mm O.D. Std. Wall Glass Tubing	Pkg/12	9096-39	72	9096-139	144	9096-239
14/20, 14/35 Joints	Pkg/12	9096-44	72	9096-144	144	9096-244
13-18mm O.D. Test Tubes	Pkg/12	9096-49	72	9096-149	144	9096-249
24/40, 24/25 Joints	Pkg/12	9096-57	72	9096-157	144	9096-257

9106-19



9106 SEPTA, PRECISION SEAL™ White Rubber

Engineered for a precision fit (80% glass to rubber contact) in standard taper glassware joints and tubes. Precision Seals are manufactured under "white room" conditions, from one certified raw material formulation for absolute consistency in all sizes, from lot-to-lot.

<i>For use with</i>	Qty	Order Code	Qty	Order Code
5 mm NMR tubes, 5mm tubing	100	9106-119	10	9106-19
Neck O.D. 7 mm glass tubing	100	9106-121	10	9106-21
Neck O.D. 8 mm glass tubing	100	9106-123	10	9106-23
Neck O.D. 10 mm glass tubing	100	9106-125	10	9106-25
Neck O.D. 13 mm tubing	100	9106-127	10	9106-27
10/30 Joint	100	9106-129	10	9106-29
14/20, 14/35 Joints	100	9106-131	10	9106-31
19/22, 19/38 Joints	100	9106-133	10	9106-33
24/40, 24/25 Joints	100	9106-135	10	9106-35
29/42, 29/38 Joints	100	9106-137	10	9106-37
Mixed Set	145	9106-139		

9106-20



9106 SEPTA, PRECISION SEAL™ Red Rubber

Same as above, except red in color.

<i>For use with</i>	Qty	Order Code	Qty	Order Code
5 mm NMR tubes, 5mm tubing	100	9106-120	10	9106-20
Neck O.D. 7 mm glass tubing	100	9106-122	10	9106-22
Neck O.D. 8 mm glass tubing	100	9106-124	10	9106-24
Neck O.D. 10 mm glass tubing	100	9106-126	10	9106-26
Neck O.D. 13 mm tubing	100	9106-128	10	9106-28
10/30 Joint	100	9106-130	10	9106-30
14/20, 14/35 Joints	100	9106-132	10	9106-32
19/22, 19/38 Joints	100	9106-134	10	9106-34
24/40, 24/25 Joints	100	9106-136	10	9106-36
29/42, 29/38 Joints	100	9106-138	10	9106-38
Mixed Set	145	9106-140		

9107



9107 SEPTA, SUBA-SEAL™ Red Rubber

Suba-Seal™ Septa, the highest quality roll-over style septa in the world. The bottom of the septa is serrated for maximum sealing even in open-top vessels and containers. Certain sizes are also perfect for maximum sealing in standard taper joints. These septa are ideal for moisture or air sensitive applications. The septa when pierced with a non-coring needle have excellent re-sealing capability. The septa have double sealing feature as the turn-over top seals on the outside of the vessel and the serrated bottom flanges seal excellently to the inner surface of the container. Suba-Seal septa are autoclaveable and are packaged in "white room" conditions. Suba-Seal is a trade mark of Sigma-Aldrich Biotechnology LP.

Description	Fits	Qty	Order Code
#9 fits neck I.D. 8mm		100	9107-116
#13 fits neck I.D. 9.5mm	10/30	100	9107-110
#17 fits neck I.D. 11mm		100	9107-114
#21 fits neck I.D. 12.5mm		100	9107-118
#25 fits neck I.D. 14mm	14/20, 14/35	100	9107-124
#29 fits neck I.D. 16mm		100	9107-126
#33 fits neck I.D. 17.5mm		100	9107-130
#37 fits neck I.D. 19mm	19/22, 19/38	100	9107-134
#41 fits neck I.D. 20.5mm		100	9107-138
#45 fits neck I.D. 22mm	24/40, 24/25	100	9107-142
#49 fits neck I.D. 24mm		100	9107-146
#53 fits neck I.D. 25.5mm		100	9107-150
#57 fits neck I.D. 27mm	29/42, 29/38	100	9107-154

9107



9107 SEPTA, SUBA-SEAL™ White Rubber

Same as above except white in color.

Description	Fits	Qty	Order Code
Sample kit, 10 of each size	All	100	9107-104
#9 fits neck I.D. 8mm		100	9107-109
#13 fits neck I.D. 9.5mm	10/30	100	9107-111
#17 fits neck I.D. 11mm		100	9107-115
#21 fits neck I.D. 12.5mm		100	9107-119
#25 fits neck I.D. 14mm	14/20, 14/35	100	9107-123
#29 fits neck I.D. 16mm		100	9107-127
#33 fits neck I.D. 17.5mm		100	9107-131
#37 fits neck I.D. 19mm	19/22, 19/38	100	9107-135
#41 fits neck I.D. 20.5mm		100	9107-139
#45 fits neck I.D. 22mm	24/40, 24/25	100	9107-143
#53 fits neck I.D. 25.5mm		100	9107-151
#57 fits neck I.D. 27mm	29/42, 29/38	100	9107-155

5708



5708 SEALS Aluminum, Lined

Natural aluminum open top crimp seals for all 20mm serum or flat finished top bottles or vials. These seals have bonded-in liners made from various rubber compounds for very precise, tight seals. The bonded liners will take repeated injections without leakage. The pressure relief seals are designed to open when the internal pressure exceeds 3±0.5 bar. The magnetic version is designed for easy pick-up of the capped vial in autosamplers and robots.

Description	Size, mm	Color	Pkg. Qty	Case Qty	Order Code
PTFE/Silicone	20	Natural	100	1000	5708-04
PTFE/Butyl Rubber	20	Natural	100	1000	5708-05
PTFE/Molded Butyl Rubber	20	Natural	100	1000	5708-06
PTFE/Silicone, Pressure Release	20	Natural	100	1000	5708-10
PTFE/Butyl Rubber, Pressure Release	20	Natural	100	1000	5708-11
PTFE/Molded Butyl Rubber, Pressure Release	20	Natural	100	1000	5708-12
PTFE/Silicone, Magnetic	20	Natural	100	1000	5708-18
PTFE/Butyl Rubber, Magnetic	20	Natural	100	1000	5708-19
PTFE/Molded Butyl Rubber, Magnetic	20	Natural	100	1000	5708-20

Septa Catalog



ACE GLASS INCORPORATED

P.O. Box 688 • Vineland, NJ 08362-0688 • 856-692-3333 • Fax: 856-692-8919

TOLL-FREE: 1-800-223-4524 • FAX: 1-800-543-6752

www.aceglass.com email: sales@aceglass.com